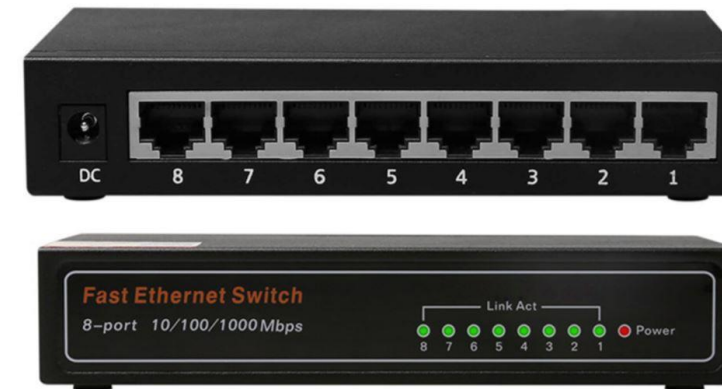


Especificações Técnicas

RJ45 Ports	08 10/100/1000 Base-TX PoE+ auto-negotiation MDI/MDI-X.
MAC Table	16K
Switch Fabric	8 Gbps
Max Packet Length	10K Bytes
LED Indicators	<ul style="list-style-type: none"> • Power, Status • Link/Activity
Input Power	DC5V / 1A
Power Consumption	1,5W Max.
Operating Temperature	-10°C to 60°C
Storage Temperature	-40°C to 80°C
Relative Humidity	5% to 90% non-condensing
Shell	Metal Case
Installation	Wall-mount
Dimension WxDxH	77 x 139 x 27 mm
Certifications	<ul style="list-style-type: none"> • ISO9001 • EN55022:2010+AC: 2011, Class A • EN 61000-3-2: 2006+A1: 2009+A2: 2009 • EN 61000-3-3: 2013 EN55024:2010 • IEC 61000-4-2: 2008 (ESD) • IEC 61000-4-3: 2010 (RS) • IEC 61000-4-4: 2012 (EFT) • IEC 61000-4-5: 2014 (Surge) • IEC 61000-4-6: 2013 (CS) • IEC 61000-4-8: 2009 (PFMF)
Waranty	5 years.

ANS308G



CARACTERÍSTICAS GERAIS

- 08 10/100/1000 Base-Tx.
- Max Consumption 1,5W
- Switch Fabric 16 Gbps
- Packet Length 10K Bytes
- MAC Table 8K

Especificações Técnicas

Model	Description
ANS308G	8x 10/100/1000M Unmanaged Ethernet Switch, DC5V/1A
Power Options	DC5V/1A

Soluções de Redes Industriais
IOT